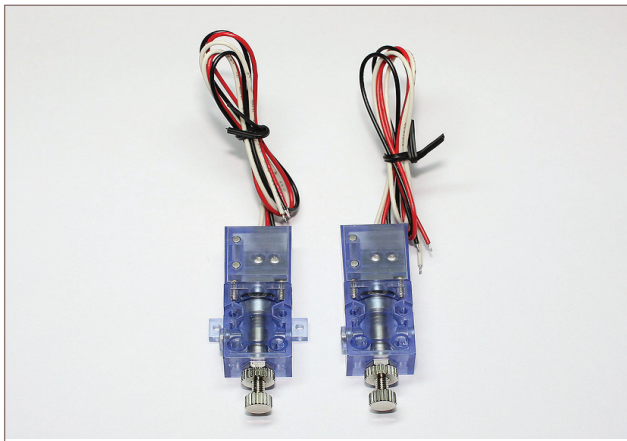


ACCESSORIES

KVSO1/KVSO2



- ▶ 가 가 .
- ▶ AC/DC VOLTAGE , NO NC .
- ▶ This compact and right vacuum sensor easily detects in contact with electric signal.
- ▶ Vacuum level can be easily adjusted by a lever.
- ▶ User can select N/O or N/C type in AC/DC voltage.

Order No.

KVS ①

① / Model
01
02

Function	Modification
NO / NC	<p>NC : () Normal close(Red)</p> <p>NO : () Normal open(White)</p>

/ Design data

MODEL	TYPE	(-kPa) PRESSURE RANGE	HYSTRESIS(kPa)	WORKING TEMPERATURE
KVS 01	ELECTRIC MACHINE CONTROL FUNCTION	10-95	±5	-10 ~ +80°C
KVS 02				

MODEL	(g) WEIGHT	CABLE	WORKING HUMIDITY	APPLICABLE FLUID
KVS 01	30	3X0.75mmX0.5m	85% RH	가 NON-CORROSIVE GAS
KVS 02				

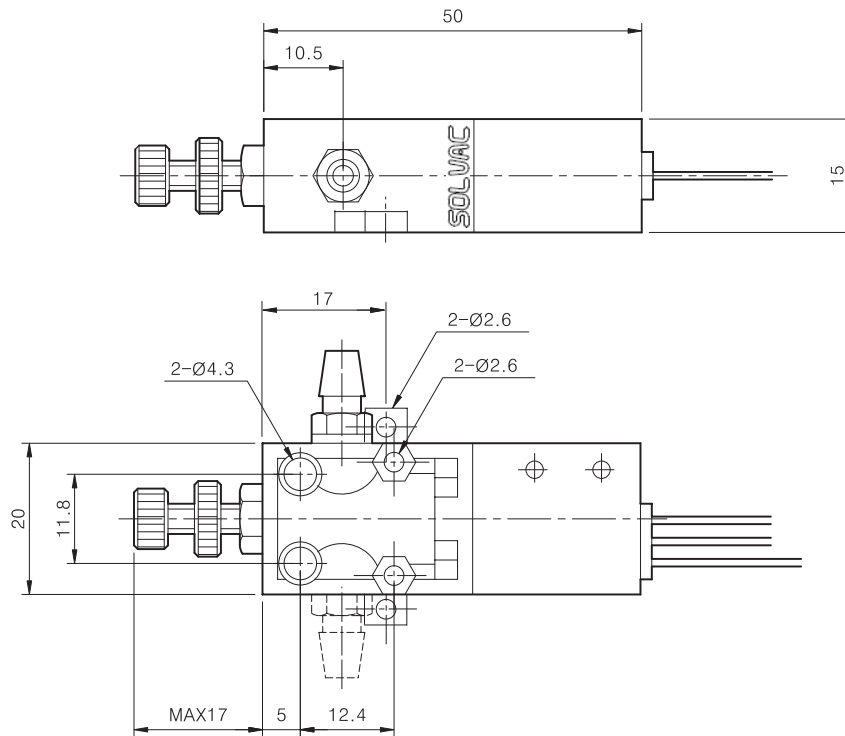
MODEL	POWER	OUT FUNCTION	MAX.AIR OUTPUT	CONNECTING PORT
KVS 01	MAX. 250V/AC(30V/DC)	NO / NC	7A	M5
KVS 02				

※품질 향상을 위해 예고없이 사양이 변경될 수 있음.
Specifications subject to change without notice.

DIMENSION

VACUUM SENSOR (KVS01 ~ KVS02)

KVS01



KVS02

