

VACUUM PUMP FMF(T)/FXF(T)



공급 압력 / Feed pressure : 0.4 ~ 0.6 MPa
 에어 소모량 / Air consumption : 228 ~ 1160 Nℓ/m
 최대 진공 / Max vacuum : - 91 ~ - 97 kPa
 소음도 / Noise level : 55 ~ 68 dBA
 재질 / Material : PPS, AL
 사용온도 / Working temperature : - 20 ~ 80 °C
 중량 / Weight : 2380 ~ 2923g

Order no.

① - ② - ③

① 용량 / CAPACITY

전기모터펌프 동일한 용량 / Capacity equivalent to electricity motor pump size

· FMF150 : 1740 Nℓ/m (1.75 KW)	· FMF150L : 1680 Nℓ/m (1.75 KW)	· FXF100 : 365 Nℓ/m (0.5 KW)
· FMF200 : 2150 Nℓ/m (2.0 KW)	· FMF200L : 2050 Nℓ/m (2.0 KW)	· FXF200 : 730 Nℓ/m (1.0 KW)
· FMF300 : 3200 Nℓ/m (2.5 KW)	· FMF300L : 2750 Nℓ/m (2.5 KW)	· FXF300 : 1095 Nℓ/m (1.5 KW)
· FMT150 : 1740 Nℓ/m (1.75 KW)	· FMT150L : 1680 Nℓ/m (1.75 KW)	· FXT100 : 365 Nℓ/m (0.5 KW)
· FMT200 : 2150 Nℓ/m (2.0 KW)	· FMT200L : 2050 Nℓ/m (2.0 KW)	· FXT200 : 730 Nℓ/m (1.0 KW)
· FMT300 : 3200 Nℓ/m (2.5 KW)	· FMT300L : 2750 Nℓ/m (2.5 KW)	· FXT300 : 1095 Nℓ/m (1.5 KW)

FMF/FXF : 진공포트 Vacuum port → 1-1/2"

FMT/FXT : 진공포트 Vacuum port → 3/4"(2 EA)

② 씬링 / SEALING

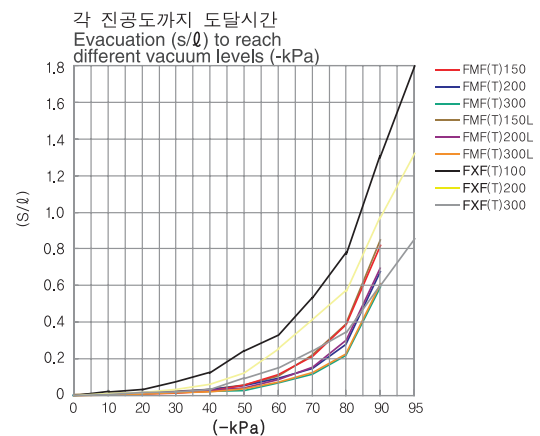
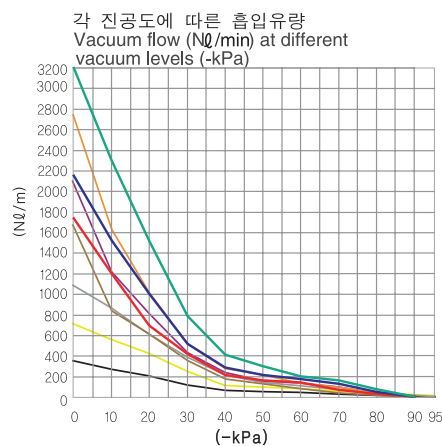
- N : NBR(표준 씬 / Standard seal)
- V : VITON
- E : EPDM
- NR : NON RETURN VALVE & NBR SEAL
- NV : NON RETURN VALVE & VITON SEAL
- NE : NON RETURN VALVE & EPDM SEAL

* 에어 절약 키트(옵션) / Air saving kit(Option)

AS : 에어 절약 키트 부착 / Air Saving kit attach

③ 에어공급밸브 / AIR SUPPLY CONTROL VALVE

- X : 없음 (None)
- M4 : DC 24V



* 품질 향상을 위해 예고없이 사양이 변경될 수 있음.
 Specifications subject to change without notice.

DESIGN DATA

펌프의 특징 / Pump Characteristics

MODEL	최대 진공 Max.Vacuum -kPa(-mmHg)	최대 진공 유량 Max.Vacuum flow(Nℓ/min)	에어 소모량 Air consumption (Nℓ/min)	소음도 noise level (dBA)	중량 weight (g)	최소 호스 내경ø(2m 이내) Min hose innerø(within 2m)		
						공급 air supply	진공 vacuum	배기 exhaust
FMF 150	-92 (-690)	1740	450 ~ 630	55 ~ 65	2532	>10	>25	>25
FMF 200		2150	600 ~ 780	55 ~ 65	2558	>10	>25	>32
FMF 300		3200	850 ~ 1160	55 ~ 65	2981	>10	>32	>40
FMT 150		1740	450 ~ 630	55 ~ 65	2474	>10	>25	>25
FMT 200		2150	600 ~ 780	55 ~ 65	2500	>10	>25	>32
FMT 300		3200	850 ~ 1160	55 ~ 65	2923	>10	>32	>40
FMF 150L	-91 (-682.5)	1680	640	55 ~ 65	2532	>10	>25	>25
FMF 200L		2050	790	55 ~ 65	2558	>10	>25	>32
FMF 300L		2750	1160	55 ~ 65	2981	>10	>32	>40
FMT 150L		1680	640	55 ~ 65	2474	>10	>25	>25
FMT 200L		2050	790	55 ~ 65	2500	>10	>25	>32
FMT 300L		2750	1160	55 ~ 65	2923	>10	>32	>40
FXF 100	-97 (-727.5)	365	228 ~ 318	63 ~ 68	2380	>10	>25	>25
FXF 200		730	456 ~ 636	63 ~ 68	2558	>10	>25	>32
FXF 300		1095	684 ~ 954	63 ~ 68	2736	>10	>32	>40
FXT 100		365	228 ~ 318	63 ~ 68	2322	>10	>25	>25
FXT 200		730	456 ~ 636	63 ~ 68	2500	>10	>25	>32
FXT 300		1095	684 ~ 954	63 ~ 68	2678	>10	>32	>40

진공흡입유량 (Nℓ/min) / Induce air in liters per minute (Nℓ/min)

MODEL	-mmHg -kPa	0 (-mmHg) 0 (-kPa)	75	150	225	300	375	450	525	600	675	712.5
			10	20	30	40	50	60	70	80	90	95
FMF 150	1740	1206	700	420	216	162	144	70	35	5.5		
FMF 200	2150	1530	1010	520	290	216	180	130	50	6.4		
FMF 300	3200	2304	1520	790	415	302	203	162	79	9.2		
FMT 150	1740	1206	700	420	216	162	144	70	35	5.5		
FMT 200	2150	1530	1010	520	290	216	180	130	50	6.4		
FMT 300	3200	2304	1520	790	415	302	203	162	79	9.2		
FMF 150L	1680	838	615	369	192	144	128	63	32	5.1		
FMF 200L	2100	1260	813	423	237	178	150	110	43	5.6		
FMF 300L	2750	1650	1073	558	296	216	167	118	58	7.0		
FMT 150L	1680	838	615	369	192	144	128	63	32	5.1		
FMT 200L	2100	1260	813	423	237	178	150	110	43	5.6		
FMT 300L	2750	1650	1073	558	296	216	167	118	58	7.0		
FXF 100	365	292	207	132	69	54	42	30	23	8.4	3	
FXF 200	730	584	414	264	138	108	84	60	46	16	5.7	
FXF 300	1095	876	621	396	207	162	126	90	69	24	8.5	
FXT 100	365	292	207	132	69	54	42	30	23	8.4	3	
FXT 200	730	584	414	264	138	108	84	60	46	16	5.7	
FXT 300	1095	876	621	396	207	162	126	90	69	24	8.5	

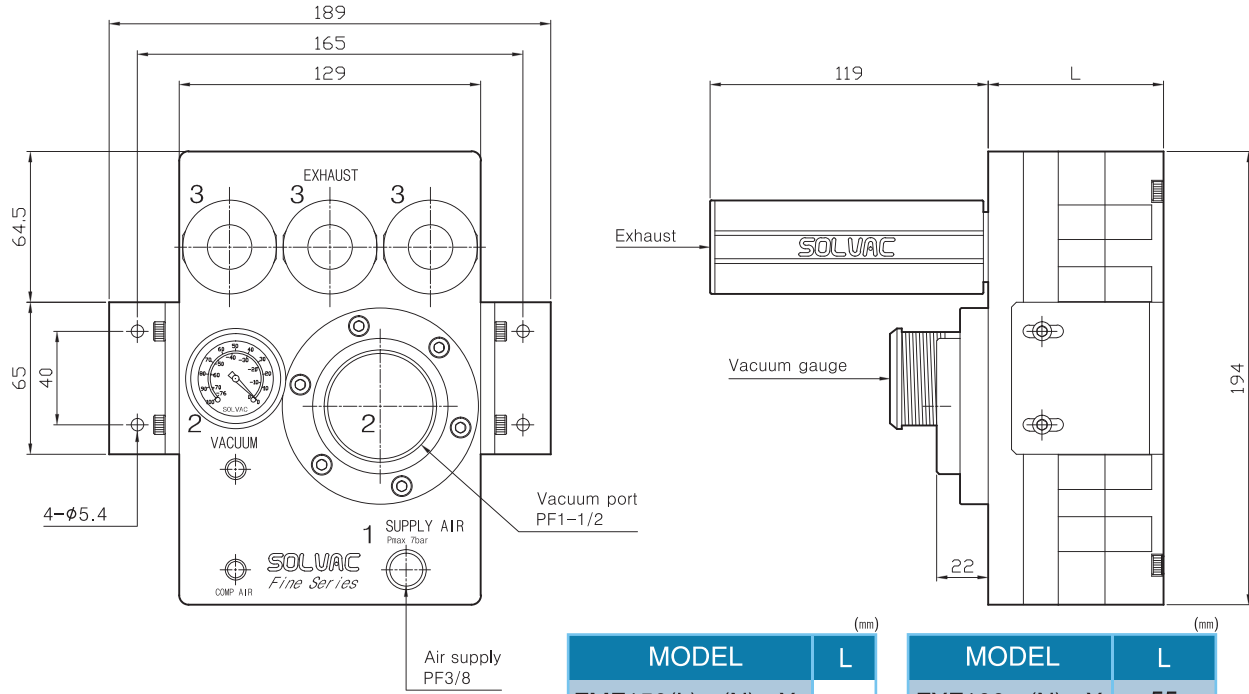
진공도달시간 (sec/ℓ) / Time in seconds to evacuate to vacuum level (sec/ℓ)

MODEL	-mmHg -kPa	75 (-mmHg) 10 (-kPa)	150	225	300	375	450	525	600	675	712.5
			20	30	40	50	60	70	80	90	95
FMF 150	0.004	0.011	0.025	0.047	0.078	0.129	0.223	0.394	0.823		
FMF 200	0.003	0.008	0.016	0.029	0.054	0.090	0.153	0.274	0.67		
FMF 300	0.002	0.007	0.014	0.026	0.048	0.074	0.126	0.235	0.59		
FMT 150	0.004	0.011	0.025	0.047	0.078	0.129	0.223	0.394	0.823		
FMT 200	0.003	0.008	0.016	0.029	0.054	0.090	0.153	0.274	0.67		
FMT 300	0.002	0.007	0.014	0.026	0.048	0.074	0.126	0.235	0.59		
FMF 150L	0.004	0.009	0.02	0.04	0.071	0.132	0.23	0.42	0.85		
FMF 200L	0.003	0.007	0.015	0.03	0.055	0.092	0.155	0.30	0.69		
FMF 300L	0.002	0.006	0.014	0.028	0.049	0.075	0.128	0.237	0.61		
FMT 150L	0.004	0.009	0.02	0.04	0.071	0.132	0.23	0.42	0.85		
FMT 200L	0.003	0.007	0.015	0.03	0.055	0.092	0.155	0.30	0.69		
FMT 300L	0.002	0.006	0.014	0.028	0.049	0.075	0.128	0.237	0.61		
FXF 100	0.014	0.035	0.067	0.13	0.25	0.368	0.563	0.799	1.35	1.88	
FXF 200	0.010	0.025	0.048	0.094	0.181	0.267	0.409	0.581	0.982	1.368	
FXF 300	0.006	0.015	0.029	0.057	0.11	0.163	0.25	0.356	0.602	0.839	
FXT 100	0.014	0.035	0.067	0.13	0.25	0.368	0.563	0.799	1.35	1.88	
FXT 200	0.010	0.025	0.048	0.094	0.181	0.267	0.409	0.581	0.982	1.368	
FXT 300	0.006	0.015	0.029	0.057	0.11	0.163	0.25	0.356	0.602	0.839	

*품질 향상을 위해 예고없이 사양이 변경될 수 있음.
Specifications subject to change without notice.

DIMENSION

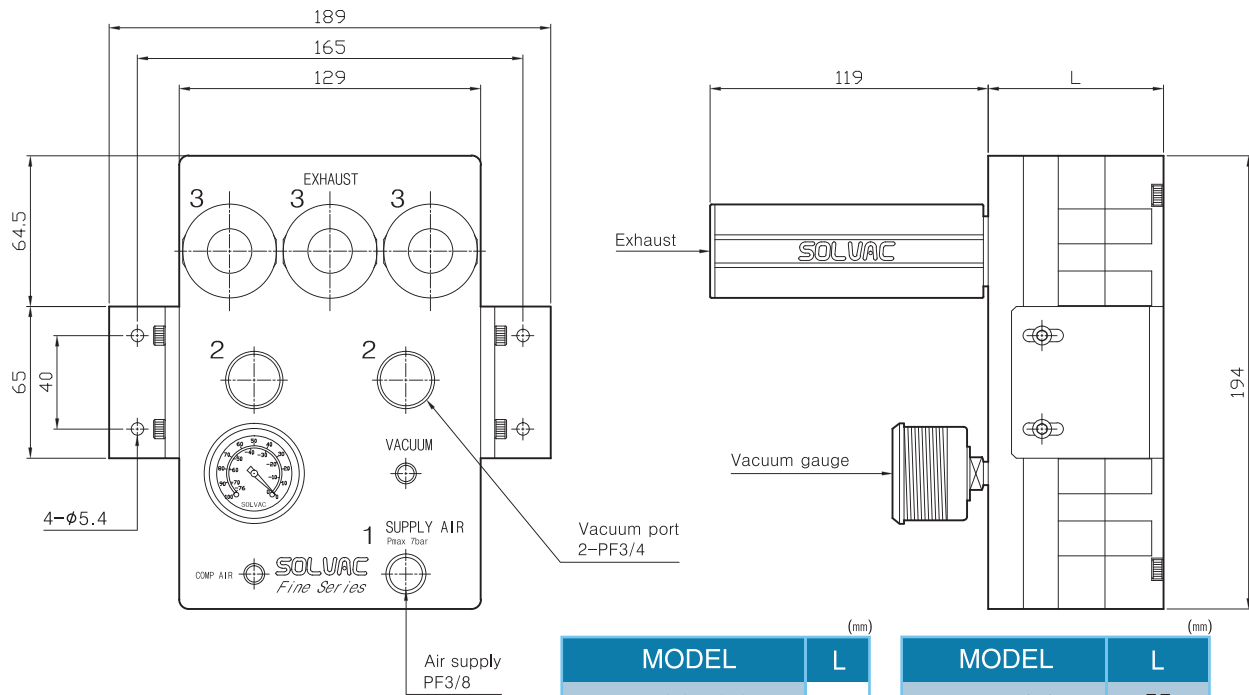
FMF/FXF type



MODEL	L (mm)
FMF150(L) - (N) - X	75
FMF200(L) - (N) - X	75
FMF300(L) - (N) - X	95

MODEL	L (mm)
FXF100 - (N) - X	55
FXF200 - (N) - X	75
FXF300 - (N) - X	95

FMT/FXT type



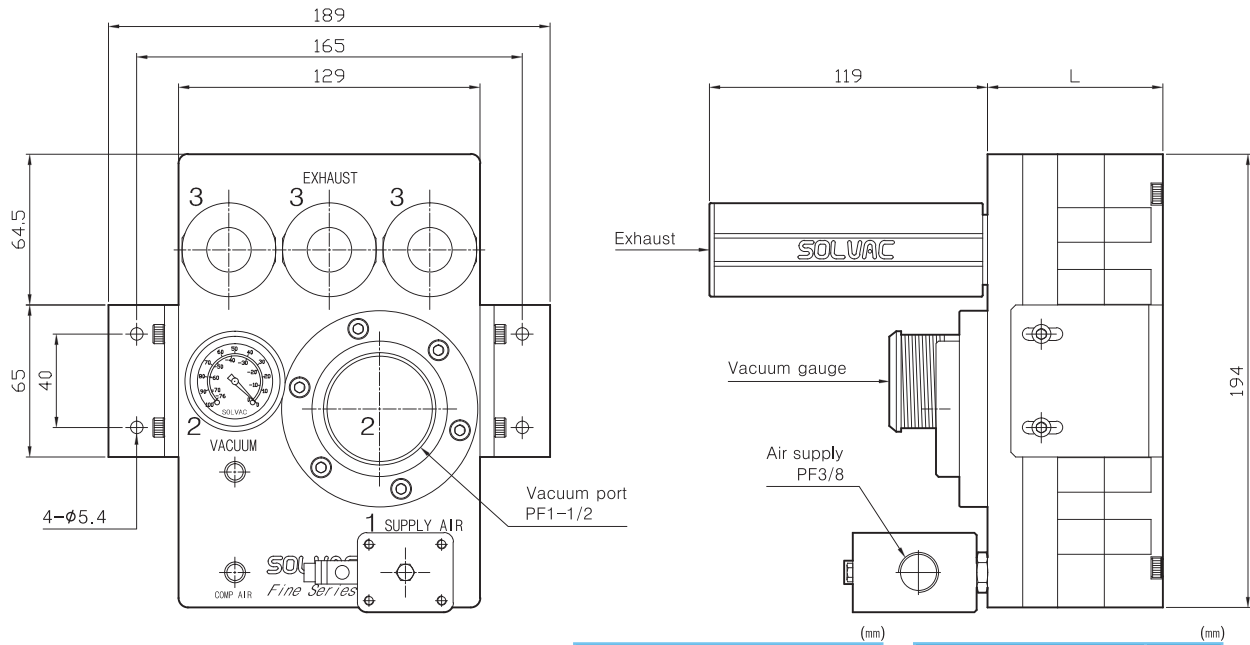
MODEL	L (mm)
FMT150(L) - (N) - X	75
FMT200(L) - (N) - X	75
FMT300(L) - (N) - X	95

MODEL	L (mm)
FXT100 - (N) - X	55
FXT200 - (N) - X	75
FXT300 - (N) - X	95

※품질 향상을 위해 예고없이 사양이 변경될 수 있음.
Specifications subject to change without notice.

DIMENSION

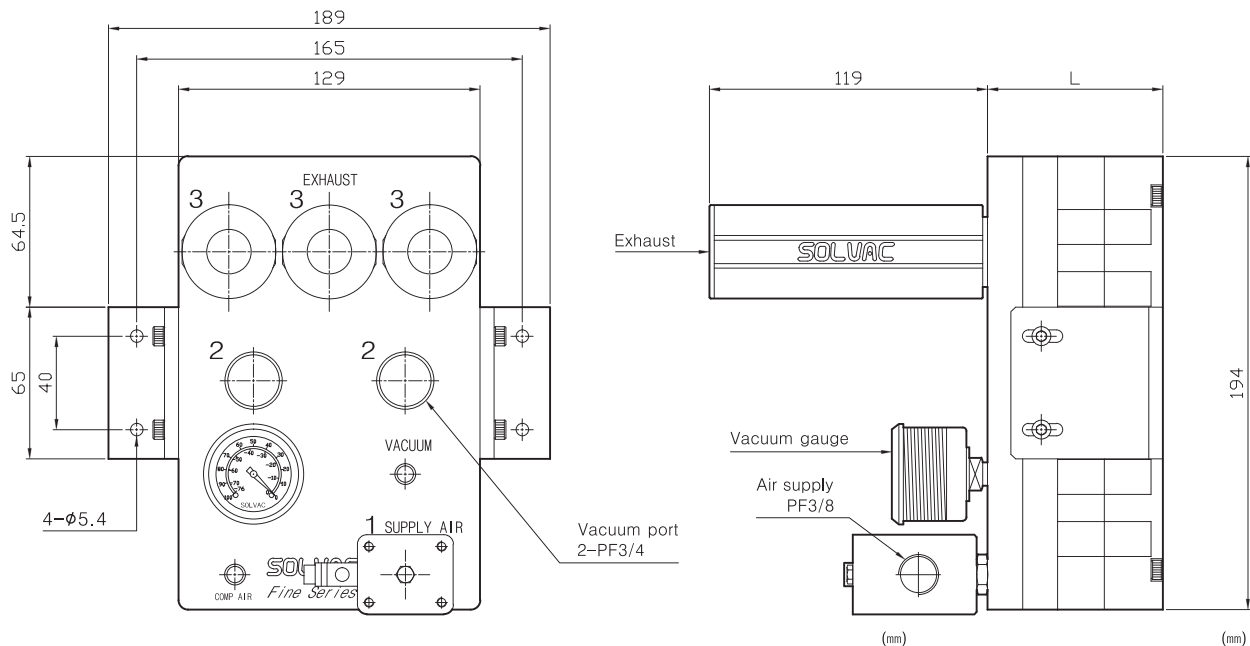
FMF/FXF type (with valve)



MODEL	L
FMF150(L) - (N) - M4	75
FMF200(L) - (N) - M4	75
FMF300(L) - (N) - M4	95

MODEL	L
FXF100 - (N) - M4	55
FXF200 - (N) - M4	75
FXF300 - (N) - M4	95

FMT/FXT type (with valve)



MODEL	L
FMT150(L) - (N) - M4	75
FMT200(L) - (N) - M4	75
FMT300(L) - (N) - M4	95

MODEL	L
FXT100 - (N) - M4	55
FXT200 - (N) - M4	75
FXT300 - (N) - M4	95

※품질 향상을 위해 예고없이 사양이 변경될 수 있음.
Specifications subject to change without notice.