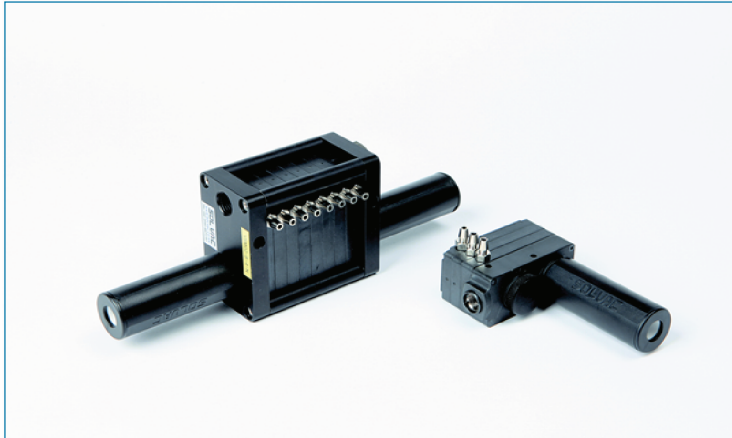


# VACUUM PUMP VSM-N-/VSX-N



공급 압력 / Feed pressure : 0.4 ~ 0.6 MPa  
 에어 소모량 / Air consumption : 30 ~ 576 Nℓ/m  
 최대 진공 / Max vacuum : - 85 ~ - 92 kPa  
 소음도 / Noise level : 55 ~ 65 dBA  
 재질 / Material : PPS, AL  
 사용온도 / Working temperature : - 20 ~ 80 °C  
 중량 / Weight : 67 ~ 471g

Order no.

## VS ① — ② — ③ — ④

### ① 모델 / MODEL

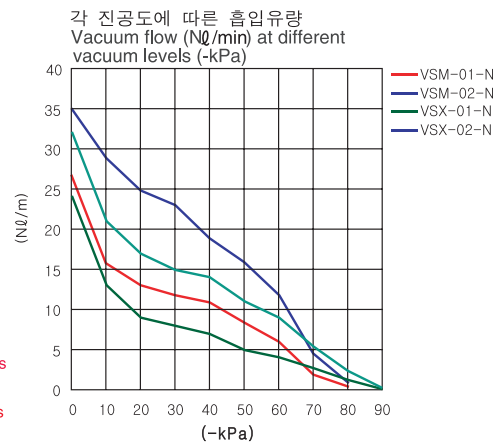
M01 X01  
 M02 X02

### ② 개별진공연조 / STACK

2 : 2연조 / stack	10 : 10연조 / stack
3 : 3연조 / stack	11 : 11연조 / stack
4 : 4연조 / stack	12 : 12연조 / stack
5 : 5연조 / stack	13 : 13연조 / stack
6 : 6연조 / stack	14 : 14연조 / stack
7 : 7연조 / stack	15 : 15연조 / stack
8 : 8연조 / stack	16 : 16연조 / stack
9 : 9연조 / stack	

유의사항  
 VSM01 / VSX01 최대 16연조까지 제작가능  
 (소음기 2대가 장착된 12연조 이상 완료)  
 VSM02 / VSX02 최대 12연조까지 제작가능  
 (소음기 2대가 장착된 6연조 이상 완료)

Remarks  
 VSM01 / VSX01 manufacturing maximum of 16 stacks  
 (Up to 12 stacks complete with 2 silencer)  
 VSM02 / VSX02 manufacturing maximum of 12 stacks  
 (Up to 6 stacks complete with 2 silencer)



### ③ 진공포트 크기

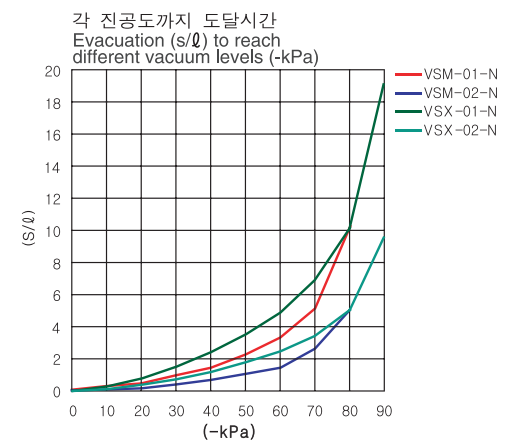
#### VACUUM PORT SIZE

4 : ∅4  
 6 : ∅6

### ④ 씰링 / SEALING

N : NBR (표준 씰 / Standard seal)  
 V : VITON  
 E : EPDM

\* 진공악세서리 필터 (특별주문)  
 VACUUM ACCESSORIES FILTER (MAKE TO ORDER)  
 - BVF06LF



※품질 향상을 위해 예고없이 사양이 변경될 수 있음.  
 Specifications subject to change without notice.

# DESIGN DATA

## 펌프의 특징 / Pump Characteristics

MODEL	최대 진공 Max.Vacuum -kPa(-mmHg)	최대 진공 유량 Max.Vacuum flow(Nℓ/min)	에어 소모량 Air consumption (Nℓ/min)	소음도 noise level (dBA)	중량 weight (g)	최소 호스 내경 ∅(2m 이내) Min hose inner∅(within 2m)		
						공급 air supply	진공 vacuum	배기 exhaust
VSM01-2	-85 (-637.5)	27 X 2	30 ~ 42	55 ~ 60	67	>2	>2.5	>3/8"X1
VSM01-3		27 X 3	45 ~ 63	55 ~ 60	80	>2	>2.5	>3/8"X1
VSM01-4		27 X 4	60 ~ 84	55 ~ 60	247	>4	>2.5	>3/8"X1
VSM01-5		27 X 5	75 ~ 105	60 ~ 65	255	>4	>2.5	>3/8"X1
VSM01-6		27 X 6	90 ~ 126	60 ~ 65	281	>4	>2.5	>3/8"X1
VSM01-7		27 X 7	105 ~ 147	60 ~ 65	299	>4	>2.5	>3/8"X1
VSM01-8		27 X 8	120 ~ 168	60 ~ 65	317	>6	>2.5	>3/8"X1
VSM01-9		27 X 9	135 ~ 189	60 ~ 65	335	>6	>2.5	>3/8"X1
VSM01-10		27 X 10	150 ~ 210	60 ~ 65	353	>6	>2.5	>3/8"X1
VSM01-11		27 X 11	165 ~ 231	60 ~ 65	371	>6	>2.5	>3/8"X1
VSM01-12		27 X 12	180 ~ 252	60 ~ 65	389	>6	>2.5	>3/8"X1
VSM01-13		27 X 13	195 ~ 273	60 ~ 65	417	>6	>2.5	>3/8"X2
VSM01-14		27 X 14	210 ~ 294	60 ~ 65	435	>8	>2.5	>3/8"X2
VSM01-15		27 X 15	225 ~ 315	60 ~ 65	453	>10	>2.5	>3/8"X2
VSM01-16		27 X 16	240 ~ 336	60 ~ 65	471	>10	>2.5	>3/8"X2
VSM02-2		-85 (-637.5)	35 X 2	60 ~ 84	55 ~ 60	67	>4	>4
VSM02-3	35 X 3		90 ~ 126	60 ~ 65	80	>4	>4	>3/8"X1
VSM02-4	35 X 4		120 ~ 168	60 ~ 65	247	>6	>4	>3/8"X1
VSM02-5	35 X 5		150 ~ 210	60 ~ 65	255	>6	>4	>3/8"X1
VSM02-6	35 X 6		180 ~ 252	60 ~ 65	281	>6	>4	>3/8"X1
VSM02-7	35 X 7		210 ~ 294	60 ~ 65	299	>8	>4	>3/8"X1
VSM02-8	35 X 8		240 ~ 336	60 ~ 65	327	>8	>4	>3/8"X2
VSM02-9	35 X 9		270 ~ 378	60 ~ 65	345	>10	>4	>3/8"X2
VSM02-10	35 X 10		300 ~ 420	60 ~ 65	363	>10	>4	>3/8"X2
VSM02-11	35 X 11		330 ~ 462	60 ~ 65	381	>10	>4	>3/8"X2
VSM02-12	35 X 12		360 ~ 504	60 ~ 65	399	>10	>4	>3/8"X2

### 진공흡입유량 (Nℓ/min) / Induce air in liters per minute (Nℓ/min)

MODEL	-mmHg -kPa	75	150	225	300	375	450	525	600
	0(-mmHg) 0(-kPa)	10	20	30	40	50	60	70	80
VSM 01	27	16	13	12	11	8	6	2.4	0.66
VSM 02	35	29	25	23	19	16	12	4.8	1.32

### 진공도달시간 (sec/ℓ) / Time in seconds to evacuate to vacuum level (sec/ℓ)

MODEL	-mmHg -kPa	75(-mmHg)	150	225	300	375	450	525	600
	10(-kPa)	20	30	40	50	60	70	80	
VSM 01	0.218	0.556	1	1.576	2.356	3.44	5.27	10.22	
VSM 02	0.109	0.278	0.5	0.788	1.178	1.72	2.635	5.158	

※품질 향상을 위해 예고없이 사양이 변경될 수 있음.  
Specifications subject to change without notice.

# DESIGN DATA

## 펌프의 특징 / Pump Characteristics

MODEL	최대 진공 Max.Vacuum -kPa(-mmHg)	최대 진공 유량 Max.Vacuum flow(Nℓ/min)	에어 소모량 Air consumption (Nℓ/min)	소음도 noise level (dBA)	중량 weight (g)	최소 호스 내경 ∅(2m 이내) Min hose inner∅(within 2m)		
						공급 air supply	진공 vacuum	배기 exhaust
VSX 01-2	-92 (-690)	24 X 2	43.2 ~ 48	55 ~ 60	67	>2	>2.5	>3/8"X1
VSX 01-3		24 X 3	64.8 ~ 72	55 ~ 60	80	>2	>2.5	>3/8"X1
VSX 01-4		24 X 4	84.4 ~ 96	55 ~ 60	247	>4	>2.5	>3/8"X1
VSX 01-5		24 X 5	108 ~ 120	60 ~ 65	255	>4	>2.5	>3/8"X1
VSX 01-6		24 X 6	129.6 ~ 144	60 ~ 65	281	>4	>2.5	>3/8"X1
VSX 01-7		24 X 7	151.2 ~ 168	60 ~ 65	299	>4	>2.5	>3/8"X1
VSX 01-8		24 X 8	172.8 ~ 192	60 ~ 65	317	>6	>2.5	>3/8"X1
VSX 01-9		24 X 9	194.4 ~ 216	60 ~ 65	335	>6	>2.5	>3/8"X1
VSX 01-10		24 X 10	216 ~ 240	60 ~ 65	353	>6	>2.5	>3/8"X1
VSX 01-11		24 X 11	237.6 ~ 364	60 ~ 65	371	>6	>2.5	>3/8"X1
VSX 01-12		24 X 12	259.2 ~ 288	60 ~ 65	389	>6	>2.5	>3/8"X1
VSX 01-13		24 X 13	280.8 ~ 312	60 ~ 65	417	>6	>2.5	>3/8"X2
VSX 01-14		24 X 14	302.4 ~ 336	60 ~ 65	435	>8	>2.5	>3/8"X2
VSX 01-15		24 X 15	324 ~ 360	60 ~ 65	453	>10	>2.5	>3/8"X2
VSX 01-16		24 X 16	345.6 ~ 384	60 ~ 65	471	>10	>2.5	>3/8"X2
VSX02-2		-92 (-690)	32 X 2	86.4 ~ 96	55 ~ 60	67	>4	>4
VSX02-3	32 X 3		129.6 ~ 144	63 ~ 65	80	>4	>4	>3/8"X1
VSX02-4	32 X 4		172.8 ~ 192	63 ~ 65	247	>6	>4	>3/8"X1
VSX02-5	32 X 5		216 ~ 240	63 ~ 65	255	>6	>4	>3/8"X1
VSX02-6	32 X 6		259.2 ~ 288	63 ~ 65	281	>6	>4	>3/8"X1
VSX02-7	32 X 7		302.4 ~ 336	63 ~ 65	299	>8	>4	>3/8"X1
VSX02-8	32 X 8		345.6 ~ 384	63 ~ 65	327	>8	>4	>3/8"X2
VSX02-9	32 X 9		388.8 ~ 432	63 ~ 65	345	>10	>4	>3/8"X2
VSX02-10	32 X 10		432 ~ 480	63 ~ 65	363	>10	>4	>3/8"X2
VSX02-11	32 X 11		475.2 ~ 528	63 ~ 65	381	>10	>4	>3/8"X2
VSX02-12	32 X 12		518.4 ~ 576	63 ~ 65	399	>10	>4	>3/8"X2

### 진공흡입유량 (Nℓ/min) / Induce air in liters per minute (Nℓ/min)

MODEL	-mmHg -kPa	0(-mmHg) 0(-kPa)	75	150	225	300	375	450	525	600	675
				10	20	30	40	50	60	70	80
VSX01	24	13	9	8	7	5	4	2.7	1.2	0.45	
VSX02	32	21	17	15	14	11	9	5.4	2.4	0.9	

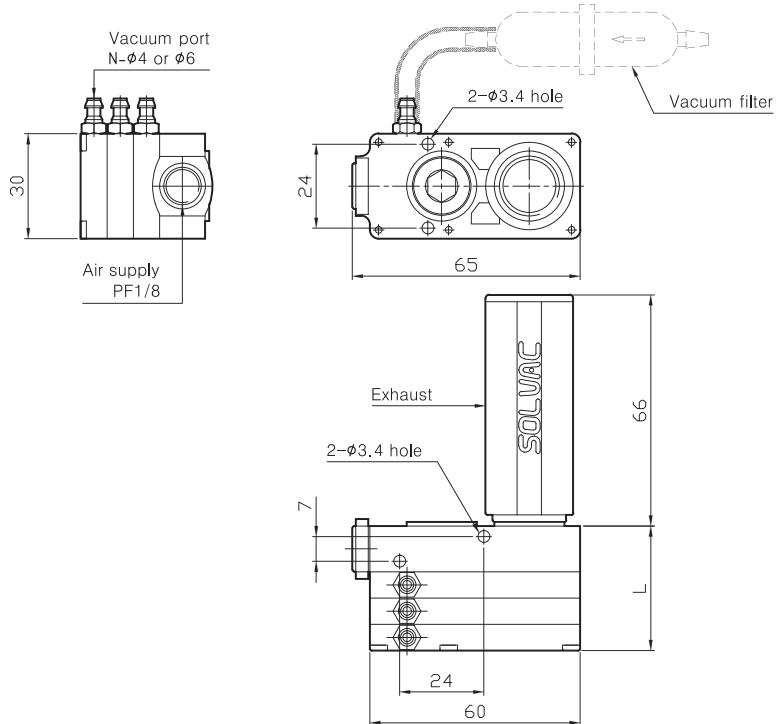
### 진공도달시간 (sec/ℓ) / Time in seconds to evacuate to vacuum level (sec/ℓ)

MODEL	-mmHg -kPa	75(-mmHg) 10(-kPa)	150	225	300	375	450	525	600	675
				20	30	40	50	60	70	80
VSX01	0.258	0.796	1.516	2.4	3.56	4.91	6.896	10.16	19.19	
VSX02	0.129	0.398	0.758	1.2	1.78	2.455	3.445	5.08	9.594	

※품질 향상을 위해 예고없이 사양이 변경될 수 있음.  
Specifications subject to change without notice.

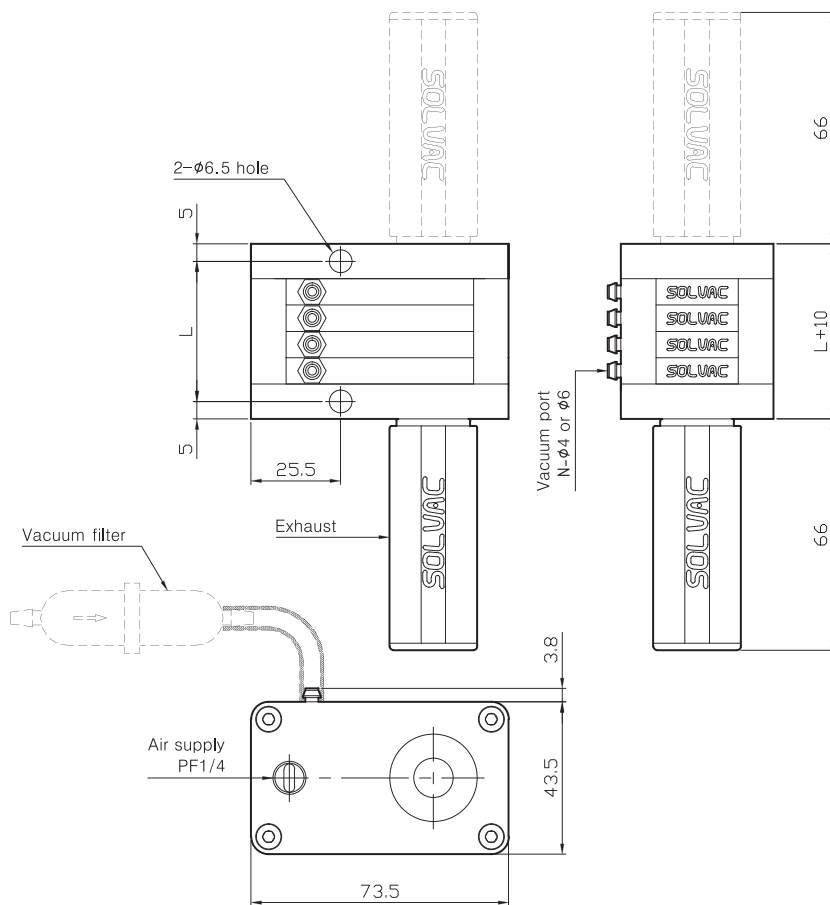
# DIMENSION

VSM/VSX(01, 02) 3 stacks below



MODEL	L (mm)
(VSM / VSX) (01, 02) - 2	28
(VSM / VSX) (01, 02) - 3	35.5

VSM/VSX(01, 02) 4 stacks above



MODEL	L (mm)
(VSM / VSX) (01, 02) - 4	40
(VSM / VSX) (01, 02) - 5	47.5
(VSM / VSX) (01, 02) - 6	55
(VSM / VSX) (01, 02) - 7	62.5
(VSM / VSX) (01, 02) - 8	70
(VSM / VSX) (01, 02) - 9	77.5
(VSM / VSX) (01, 02) - 10	85
(VSM / VSX) (01, 02) - 11	92.5
(VSM / VSX) (01, 02) - 12	100
(VSM / VSX) 01 - 13	107.5
(VSM / VSX) 01 - 14	115
(VSM / VSX) 01 - 15	122.5
(VSM / VSX) 01 - 16	130

\*품질 향상을 위해 예고없이 사양이 변경될 수 있음.  
Specifications subject to change without notice.